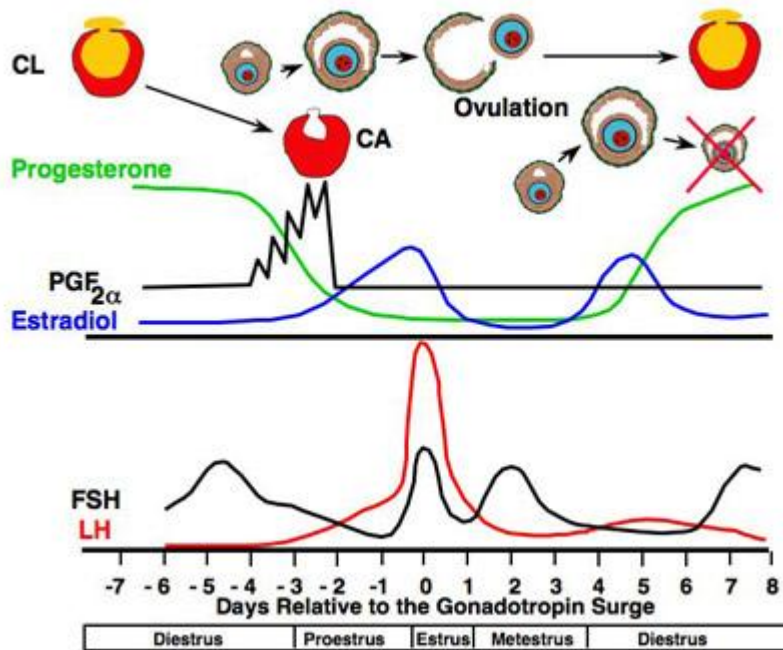




DEPARTMENT OF
ANIMAL SCIENCES
University of Wisconsin-Madison

Lecture 9 The Estrus Cycle

Figure 1. Hormonal and Ovarian Changes During the Estrous Cycle

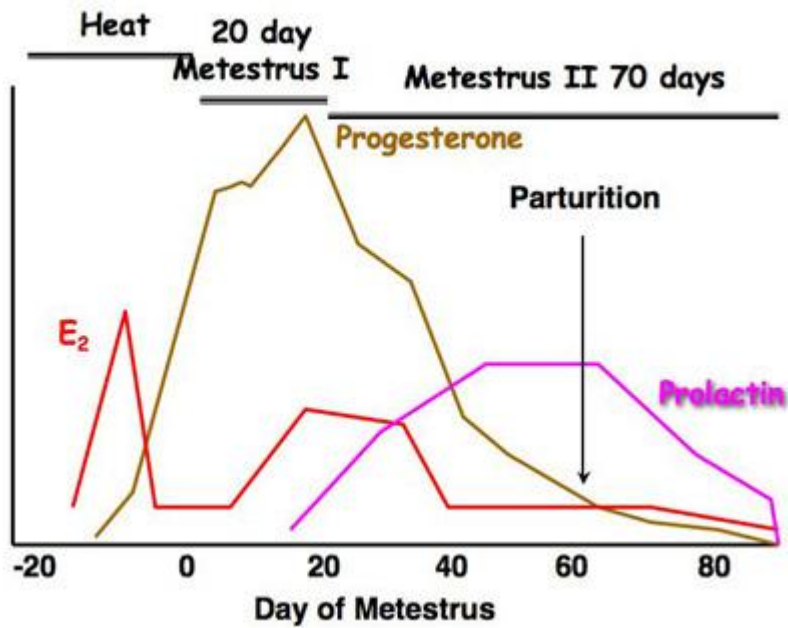
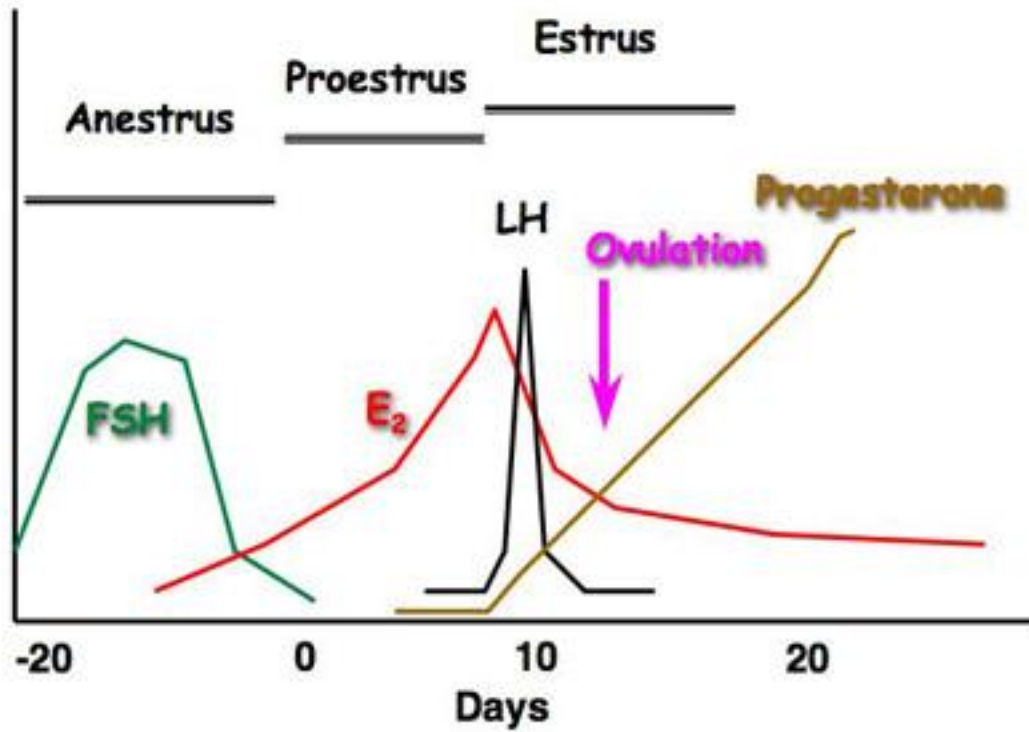


[Lecture 9](#)

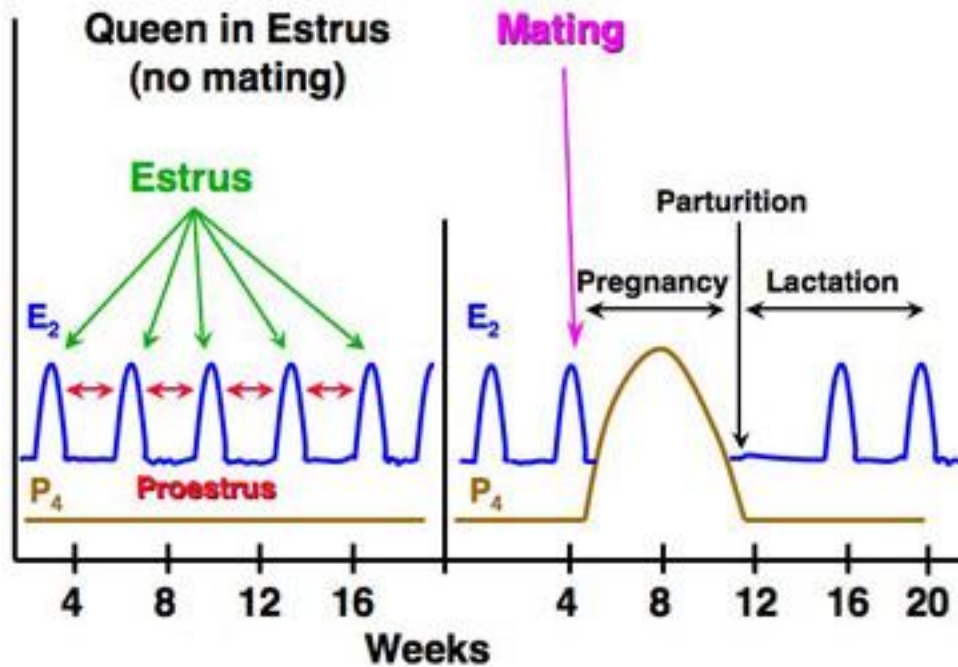
[List of Figures](#)

Figure 2. Hormonal Changes in the Dog and Cat

Hormonal Changes in the Bitch



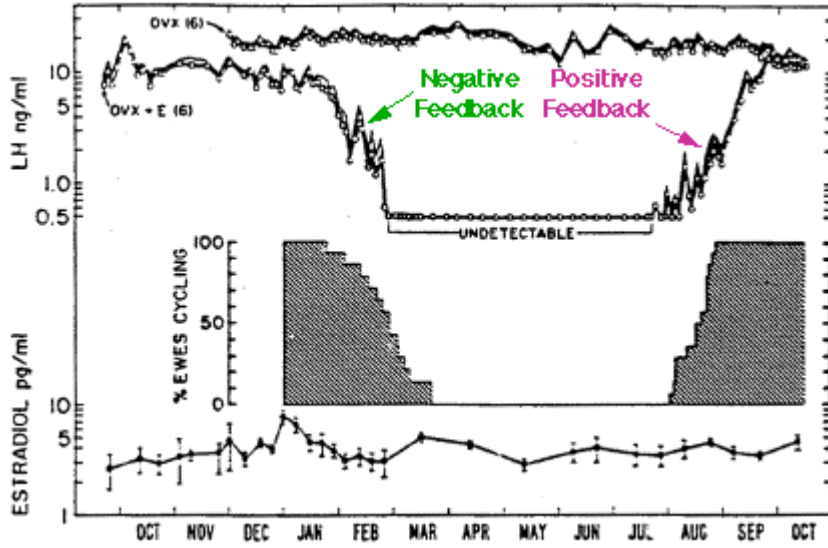
Hormonal Changes in the Queen



[Lecture 9](#)

[List of Figures](#)

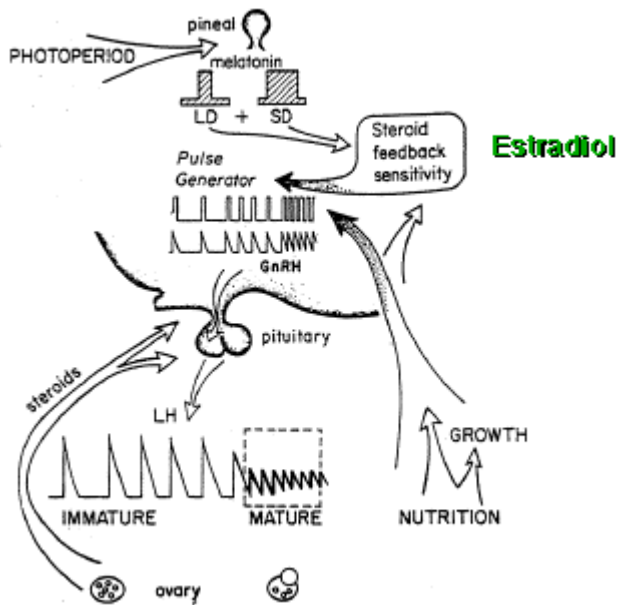
Figure 3. Ovex experiment on the effect of season on estradiol feedback in sheep.



[Lecture 9](#)

[List of Figures](#)

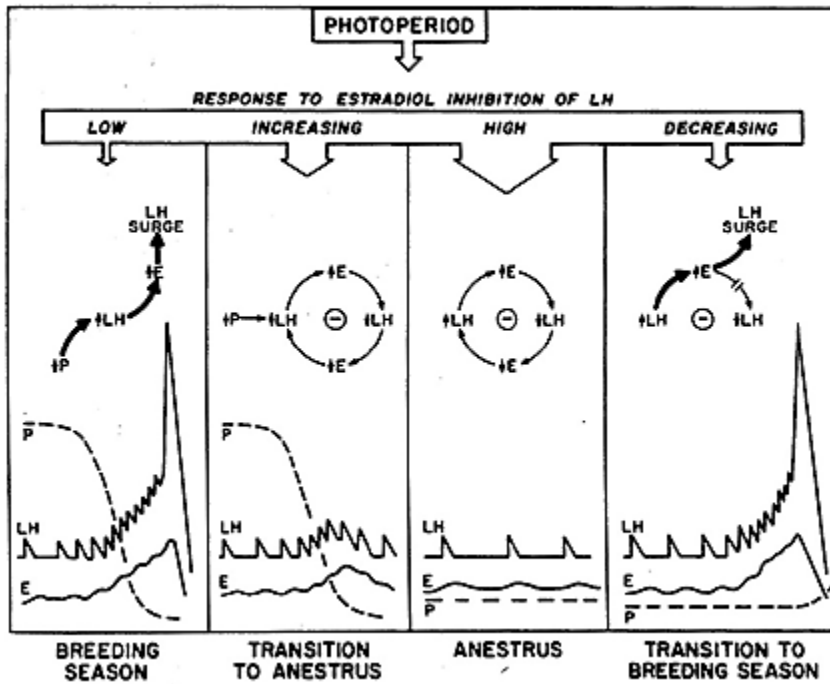
Figure 4. Diagram on the role of photoperiod and pineal gland on steroid feedback and seasonal estrous cycles.



[Lecture 9](#)

[List of Figures](#)

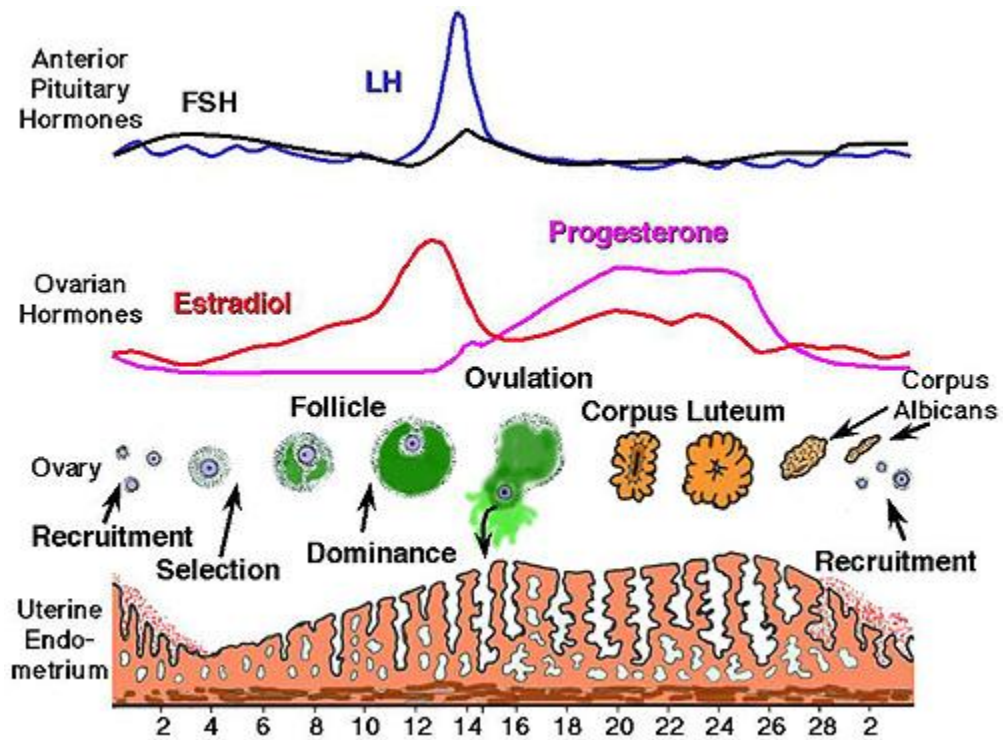
Figure 5. Changes in Estradiol Feedback that Regulate Seasonal Anestrus in Sheep



[Lecture 9](#)

[List of Figures](#)

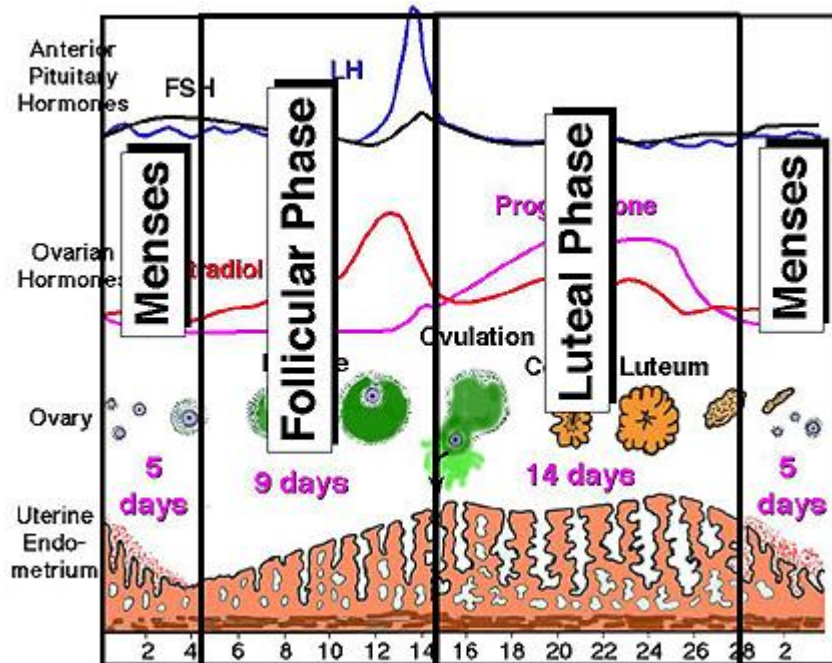
Figure 6. Human menstrual cycle



[Lecture 9](#)

[List of Figures](#)

Figure 7. Phases of the menstrual cycle



[Lecture 9](#)

[List of Figures](#)

Figure 8. Variation in length of menstrual cycle

Variation in Menstrual Cycle Length

